

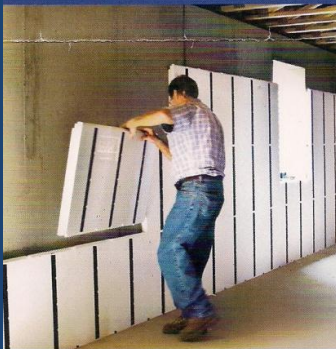


# Transform your Basement



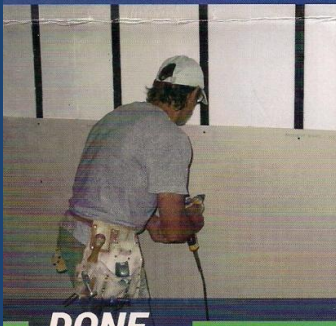
## STICK

Zero-Penetration Installation  
Durable Attachment Studs



## STACK

Code-Approved Insulation  
Keeps Basements Dry



## DONE

Built-in Electrical Chaseways  
Ready for Drywall and Finish



“Making  
Homes  
Healthy”

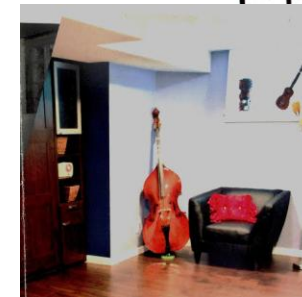
Supplied exclusively in Maine by:  
Harlow Home Design  
Michael Harlow 207.739.0673  
[mharlow@harlowhomedesign.com](mailto:mharlow@harlowhomedesign.com)



*before*



*during*



*after*

with



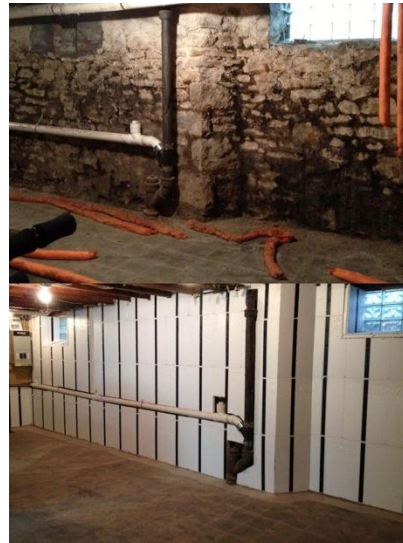
**Engineered Panels**

## 5 Reasons to choose InSoFast for Your Insulation Projects:

- 1) Fast, Clean, & Quiet Installation**  
*One dad reported he was able to do the renovation in his basement while his kids were sleeping!*
- 2) Mold and Moisture Control**  
*InSoFast panels will not rot, rust, warp or decay. The interlocking panels prevent water migration through the insulation, and drain condensation. There is no wood for mold or mildew to grow on.*
- 3) Saves Space – More Room**  
*Compared to traditional stud and fiberglass or rigid foam, the InSoFast panels save 3-6" of floor space in a room—perfect for a finished basement, tiny house or even a survival shelter!*
- 4) Continuous Insulation**  
*The tight, interlocking channels form an effective seal against thermal transfer without tape or glue on seams. There is no “bridging” from studs in the wall that transfer heat and cold.*
- 5) A Healthier Home**  
*InSoFast panels do not contain ozone depleting CFCs or HCFCs, and there is no formaldehyde, that could affect the indoor air quality of your home. The closed cell foam is inert and will not break down over time.*



**No matter how  
your basement looks now...**



**...It can be TRANSFORMED!**



**From floor to ceiling--ready for living!**

## Additional Facts to Consider:

### R-Value:

*InSoFast EX2.5 panels, rated at R10, outperforms traditional R13 fiberglass insulated 2x4 stud walls by providing continuous insulation — no gaps, no thermal transfer, no air or moisture can pass through the sealed barrier.*

### Strength:

*InSoFast polystyrene studs are made of 100% recycled material, and when properly installed can hold as much as a commercial-grade steel stud. A flat screen TV, a kitchen cabinet, or a bookshelf full of books—InSoFast will pass the test.*

### Cost:

*According to Mike Guertin, editor of Fine Homebuilding, “InSoFast retails for about 30% to 40% more than the cost of foam, studs, and plates needed to insulate and frame basement walls...But these panels save on labor, so the total cost of finished basement walls is either a wash or slightly less with InSoFast.”*

### Universal:

*InSoFast can be used in residential or commercial buildings, old or new, interior or exterior walls, basement floors, and crawlspaces. Let us design a solution for your project!*

**Contact:** Mike at 207-739-0673